



## CONFERENCE OFFER

### CONFERENCES & MEETINGS

Looking for the perfect location for your next event?

The Dream Castle Hotel at Disneyland® Paris provides the ideal framework.

Our 4-star hotel which is located at the heart of the leafy and calm French countryside is also 35 minutes away from Paris, 40 minutes away from the Roissy Charles de Gaulle and Orly airports and only 8 minutes by free shuttle bus from the RER/TGV/Eurostar train station and Disney® Parks.

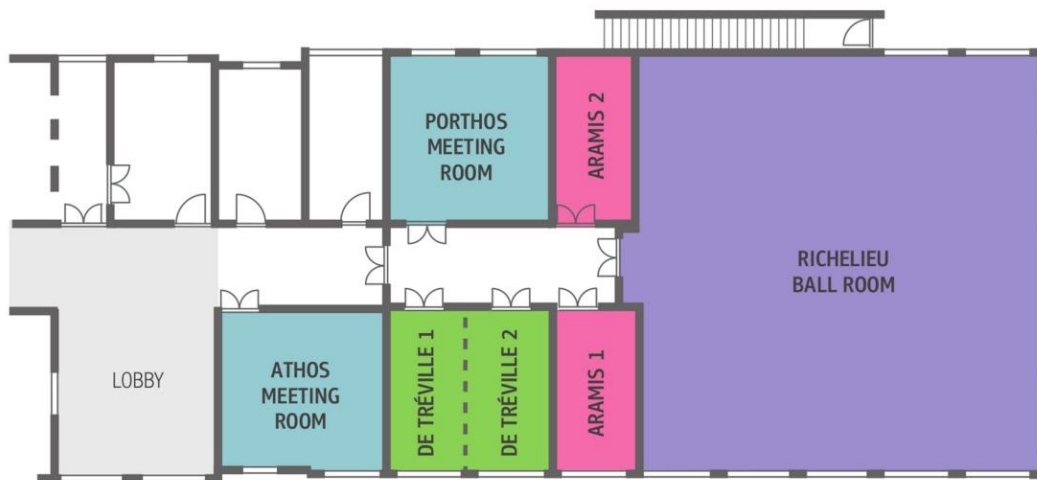
Our 9 conference rooms (584 m<sup>2</sup>) are at your disposal for any private or corporate event. All our meeting rooms are filled with daylight and have a video screen, air conditioning and high speed internet access 30 Mbps with our fibre optic network.

Our 2 restaurants and bar have splendid views on the French garden.

As well as enjoying the elegant setting of a 4-star hotel, live a unique experience in an original setting that will make you travel through time and make your event most memorable.

| CONFERENCE ROOMS | m <sup>2</sup> |     |     |    |    |     | Heigh Ceiling | Dimension de salle (m) |
|------------------|----------------|-----|-----|----|----|-----|---------------|------------------------|
| Richelieu        | 306            | 300 | 150 | 90 | 80 | 350 | 2.8           | 18.0 x 17.0            |
| De Tréville 1+2  | 45             | 40  | 24  | 20 | 20 | 45  | 2.9           | 7.5 x 6.0              |
| De Tréville 1    | 22             | 15  | 12  | 10 | -  | 20  | 2.9           | 7.5 x 3.0              |
| De Tréville 2    | 22             | 15  | 12  | 10 | -  | 20  | 2.9           | 7.5 x 3.0              |
| Portos           | 49             | 42  | 24  | 22 | 22 | 50  | 2.9           | 7.0 x 7.0              |
| Athos            | 49             | 42  | 24  | 22 | 22 | 50  | 2.9           | 7.0 x 7.0              |
| Aramis 1         | 25             | 15  | 12  | 10 | -  | 20  | 2.9           | 7.0 x 3.5              |
| Aramis 2         | 25             | 15  | 12  | 10 | -  | 20  | 2.9           | 7.5 x 3.0              |
| Constance        | 40             | 25  | 16  | 18 | 16 | -   | 2.5           | 5.4 x 5.55             |
| Perceval         | 35             | 25  | 18  | 14 | 14 | -   | 2.5           | 8.0 x 5.4              |

\* Our rooms rental is indicated daily without audio-visual nor technical equipment



The following services are available on demand:

- Translation equipment
- Video conferencing
- Team building activities
- Flowers arrangement



Dream Castle Hotel, 40 Avenue de la Fosse des Pressoirs, Val de France, 77703 Magny le Hongre Cedex 4, Tel : +33 1 64 17 90 00  
info@dreamcastle-hotel.com, www.vi-hotels.com/en/dream-castle, www.vi-hotels.com

## CONFERENCE PACKAGES WITHOUT ACCOMODATION

### DAY DELEGATE

- ▼ Conference room rental adapted to your event
- ▼ Welcome coffee
- ▼ Coffee break in the morning and afternoon
- ▼ Mineral water available in the room (all day)
- ▼ Lunch (menu or buffet)
- ▼ Standard equipment : screen, pads, pens, paperboards and markers

From EUR 62,- VAT excl.

Rate per person and per day

## CONFERENCE PACKAGES WITH ACCOMODATION

### SEMI RESIDENTIAL

- ▼ Conference room rental adapted to your event
- ▼ Coffee break in the morning and afternoon
- ▼ Mineral water available in the room (all day)
- ▼ Lunch (menu or buffet)
- ▼ Standard equipment : screen, pads, pens, paperboards and markers
- ▼ Single or double room accommodation
- ▼ Breakfast buffet

Rates on request

### RESIDENTIAL

- ▼ Conference room rental adapted to your event
- ▼ Coffee break in the morning and afternoon
- ▼ Mineral water available in the room (all day)
- ▼ Lunch (menu or buffet)
- ▼ Standard equipment : screen, pads, pens, paperboards and markers
- ▼ Dinner
- ▼ Single or double room accommodation
- ▼ Breakfast buffet

Rates on request

*Packages available for minimum 10 people*

## CATERING



### THE EXCALIBUR BAR

The cosy Excalibur bar is decorated in a medieval style with a muffled and colourful atmosphere. You will be able to have « à la carte » snacks for lunch and our special cocktails in the evening, which you can enjoy on the terrace at summer time.

Opening hours : 11:00 a.m. to 11.30pm (until midnight during summer season)

Capacity : 90 seats

### THE SANS SOUCI

Decorated upon the Sans Souci Castle theme in Postdam, Germany, this restaurant is dedicated to American buffet breakfasts.

You may privatize it for a ball or themed party.

Opening hours : 7.00 a.m. to 11.00 a.m.

Capacity : 300 seats

### THE MUSKETEERS RESTAURANT

The second restaurant, decorated upon the Three Musketeers theme, offers a themed buffet dinner with French and European specialties.

The restaurant is opened for conferences' lunch.

Opening hours : 6.30 p.m. to 10.30 p.m

Capacity : 200 seats indoors and 60 seats in the terrace opened at summer time.

## OUR GALA MENUS (Exemple)

### « GOURMET » MENU

#### Starters:

Scallops with leek stems cooked in butter sauce



Or, Bellota Iberico Ham, onions in balsamic sauce with toasts



Or, Scampi tails with citrus fruit and artichoke



#### Main dishes:

Cod fillet, creamy Macon sauce, vegetable Risotto



Or, lamb knuckle cooked in lemony thyme juice, vitelotte potato mash



Or, duck fillet with orange sauce and polenta pebbles



#### Cheese:

Tray of mature cheeses



#### Desserts:

Dark chocolate pyramid



Or, shortbread-base lemon meringue with raspberry sorbet



Or, Apple tart and Bourbon vanilla ice cream



Included : Mineral water, ¼ wine & Coffee

## DAY DELEGATE MENU

*included in the day delegate package*

### Starters:

- Pumpkin soup and a baguettine forestière
- Or, Vegetable quiche with a salade pastorale
- Or, Winter salad with faisselle
- Or, Mushrooms ravioles with fennel and crayfishes sauce
- Or, Cured meats plate



### Main dishes:

- Pollock and vegetables
- Or, Guinea fowl supreme with potato gratin and sauce chasseur
- Or, Knuckle of pork with honey and potatoes purée
- Or, Veal blanquette with a sweet potatoes purée
- Or, Leeks risotto and scallops



*All meals include a side dish of seasonal vegetables (depending on market deliveries).*

### Desserts :

- Pears tart with mousseline
- Or, Blueberries tart
- Or, Opéra
- Or, Vanilla and toffee bavarian
- Or, Fruits salad



### Option:

French cheese EUR 7,00 VAT excl. in addition



Included: Mineral water, ¼ wine and coffee

## ACCOMODATION



## ROOMS AND SUITES

The Dream Castle Hotel has 397 rooms and Suites centered on the theme of castles, knights and Kings. All our rooms have a minimal surface of 27m<sup>2</sup>.

- ▼ Single/Double rooms
- ▼ Double rooms for people with reduced mobility
- ▼ Twin Rooms
- ▼ Family Rooms
- ▼ Suites

## ROOM FACILITIES

Our rooms include:

- ▼ Hypoallergenic bedding
- ▼ Individual air conditioning
- ▼ Mini fridge (filled upon request)
- ▼ Flat-screen TV with International and cabled channels
- ▼ Welcome Courtesy Tray with tea and coffee facilities
- ▼ WIFI access
- ▼ Room service (extra charge)
- ▼ L'Occitane beauty products in the room

## BEAUTY & WELLNESS CENTER



## WELLNESS CENTER

Enjoy our indoor swimming pool as well as our fitness room.  
You will also be able to have free access to our Jacuzzi.

Opening hours :           Swimming pool : 8:00 a.m. – 09:45 p.m.  
                                  Fitness room : 07:00 a.m. – 09:00 p.m.  
                                  Jacuzzi : 11:00 a.m. – 09:00 p.m.

## ASIAN VILLA SPA

The Spa Asian Villa is a 300m<sup>2</sup> center for your wellbeing and suggests many different types of massages in our modern massage rooms. All services provided by the hotel spa are provided with top range products from Sense of Spirit brand, which offers a full care-body range of products, supported by science

### Our Spa offers :

- ▼ Face care
- ▼ Sauna, Hammam
- ▼ Traditionnal Thai massages
- ▼ Traditionnal Californian massages

Opening hours: 10:00 a.m. – 09:00 p.m.



## ON SITE AND NEARBY ACTIVITIES



### ON SITE ACTIVITIES

- ▼ Ping-Pong
- ▼ Billiard
- ▼ Baby foot
- ▼ Video games

### NEARBY ACTIVITIES

- ▼ Disneyland® Paris Golf (5 minutes by car)
- ▼ Disneyland® Paris : 2 parks (8 minutes by free shuttle bus)
- ▼ Disney® Village : restaurants and boutiques (8 minutes by free shuttle bus)
- ▼ La Vallée Village Chic Outlet Shopping (10 minutes by car or shuttle)
- ▼ Aquarium Sea Life Paris Val d'Europe (10 minutes by car)
- ▼ Paris (35 minutes by car)
- ▼ Vaux le Vicomte and Fontainebleau castles (50 minutes by car )
- ▼ Champagne caves (1h by car)
- ▼ Medieval city of Provins (1h by car)

## TEAM BUILDING INCENTIVES

- ▼ Moto sports (SUV, Jeep, quad bike, rally, karting...)
- ▼ Outdoor activities (orienteering race, tree climbing, mountain bike, archery, Olympics, etc...)
- ▼ Golf in the Domaine de la Brie
- ▼ Massages
- ▼ Dinner show in the greatest Parisian music halls
- ▼ Dinner cruise on the Seine in Paris
- ▼ Disney® Parks
- ▼ Different types of activities (music, thematic games : casino, quizz, etc...)
- ▼ Oenology and wine knowledge tests
- ▼ Champagne cellars in Reims

## GIFTS



### L'OCCITANE GIFT PACKAGES

- ▼ For women                   **EUR 35,- VAT excl.**
- ▼ For men                       **EUR 33,- VAT excl.**

### CHAMPAGNE PANNIER BOTTLE

- ▼ 37,5 cl. bottle               **EUR 25,- VAT excl.**
- ▼ 75 cl. bottle                 **EUR 40,- VAT excl.**

### BODY CARE

Enjoy a moment of peace and relaxation in our Spa Asian Villa

- ▼ Voucher from               **EUR 50,- VAT excl.**

### GIFT PACKAGE HOTELS & PREFERENCE

For more information please get in touch with us

- ▼ Gift package               **from EUR 222,- VAT excl. to EUR 407,- VAT excl.**

## GEOGRAPHICAL LOCATION

### FROM THE CHARLES DE GAULLE, ORLY AND BEAUVAIS TILLE AIRPORTS

- ▼ The hotel is 30 minutes from the CDG and Orly airports (EUR 20,- fare ticket\*). Regular shuttles are also possible from the Beauvais Tillé and Vatry airports.
- ▼ Taxi transfers are also possible with our partner Loca Val d'Europe, for a ticket fare of EUR 80,-\* (shuttle from 1 to 5 people) from the Charles de Gaulle and Orly airports and from EUR 130,-\* (from 1 to 5 people) from the Beauvais airport.
- ▼ You may also rent a car with our Partner Sixt from the airports.

*\*Prices may be subjects to changes*

### FROM THE MARNE-LA-VALLEE - CHESSY TRAIN STATION

- ▼ The train station is just in front of the Disney® Parks and is reachable by RER A, TGV and Eurostar. A free shuttle bus (n°54) links the hotel to the parks from 6:30am to 11:45pm (every 15 to 20 minutes approximately).

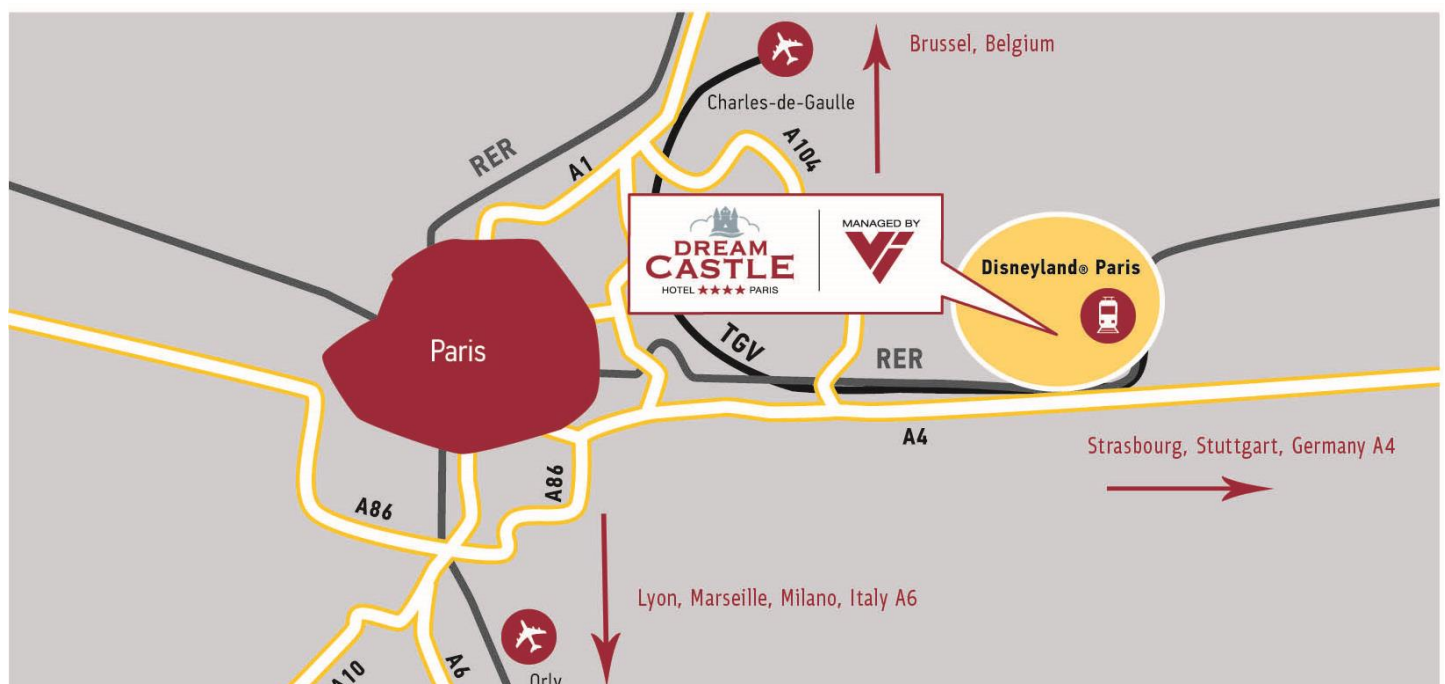
*Timetables may be subject to changes.*

Length of trip : 8 minutes

- ▼ The RER A links the Marne-la-Vallée - Chessy train station to Paris in 35 minutes.

### FROM THE MOTORWAY

- ▼ Motorway A4 : Paris-Metz-Nancy, get out at n°14. Follow « Hôtels du Val de France », Magny le Hongre, go on for 2 kms. At the roundabout, turn right, the Dream Castle Hotel is the third one on the left.



## CONTACT

For further information, please contact our team :

Mrs Stéphanie Gil  
Director of Sales

Tel.: +33 1 64 17 90 16  
Fax: +33 1 64 17 90 15  
E-mail: [conference@vi-hotels.fr](mailto:conference@vi-hotels.fr)

Mrs Margaux Ternisien  
Conference & Banqueting Coordinator (Dream Castle)

Tel.: +33 1 64 17 90 32  
Fax: + 33 1 64 17 90 15  
E-mail: [conference@vi-hotels.fr](mailto:conference@vi-hotels.fr)